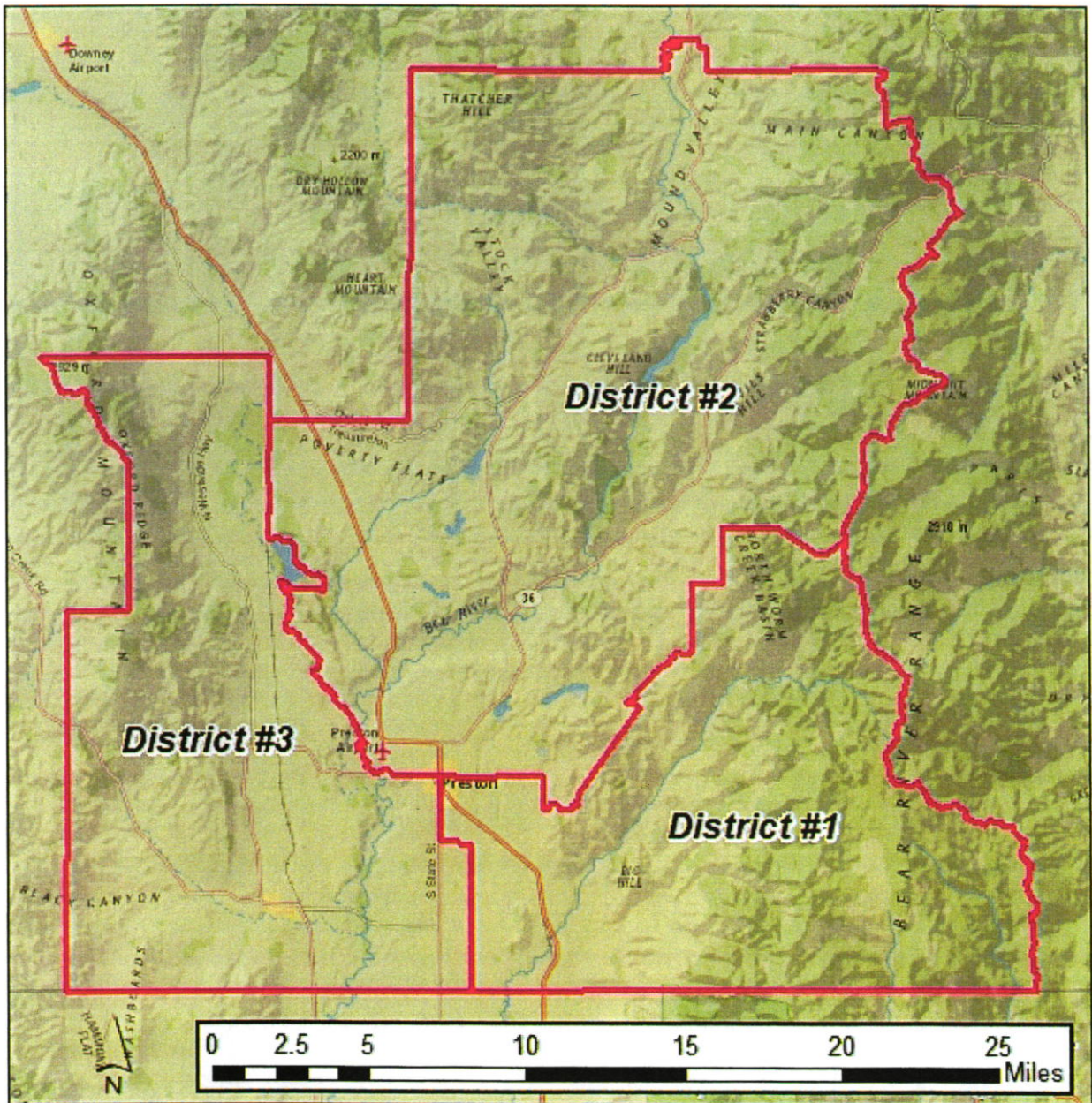
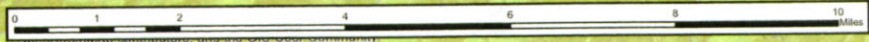
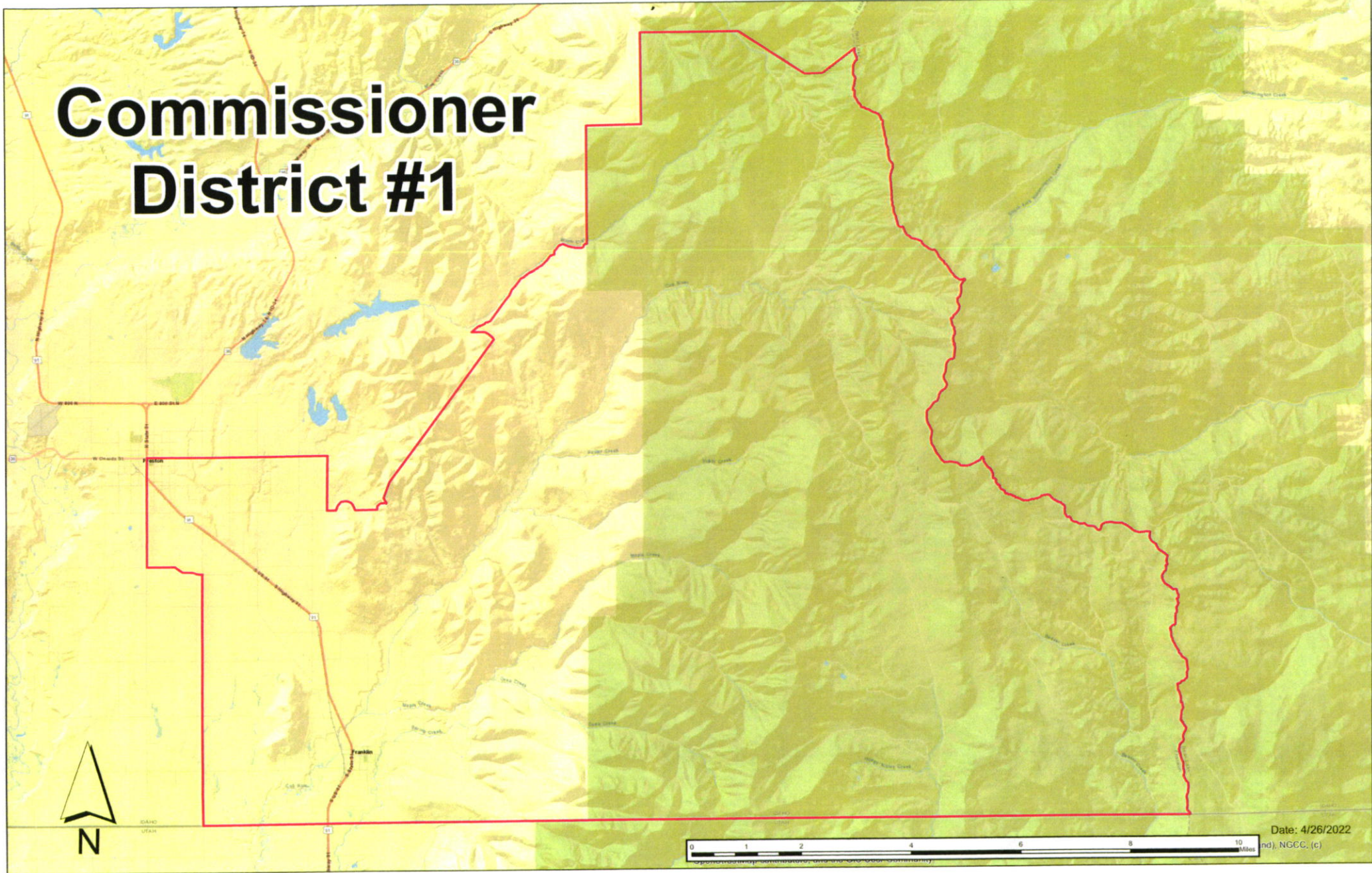




Franklin County Commissioner Districts



Commissioner District #1



Date: 4/26/2022
nd), NGCC, (c)

FRANKLIN COUNTY COMMISSIONER DISTRICT #1

Commencing at the intersection of State Street and Oneida Street;

Thence east on Oneida Street to 2600 East;

Thence south on 2600 East to 800 South;

Thence east on 800 South to the top of Giraffe Hill,

Thence northeasterly on a dirt road, following the dirt road to a peak;

Thence northeasterly along the ridge line to Glendale Road where the Preston water line intersects with Glendale Road;

Thence northwesterly on Glendale Road to Worm Creek Road;

Thence northeasterly on Worm Creek Road to the Caribou-Targhee National Forest boundary line;

Thence north 2 miles along the Caribou-Targhee National Forest boundary;

Thence east 1 mile along the Caribou-Targhee National Forest boundary;

Thence north 1 $\frac{3}{4}$ mile along the Caribou-Targhee National Forest boundary to the power lines;

Thence east along the power lines, following all directional changes of said power lines, until reaching the Franklin County boundary;

Thence south along the Franklin County Boundary line, following all directional changes of said boundary, until it reaches the south east corner of the Franklin County Boundary;

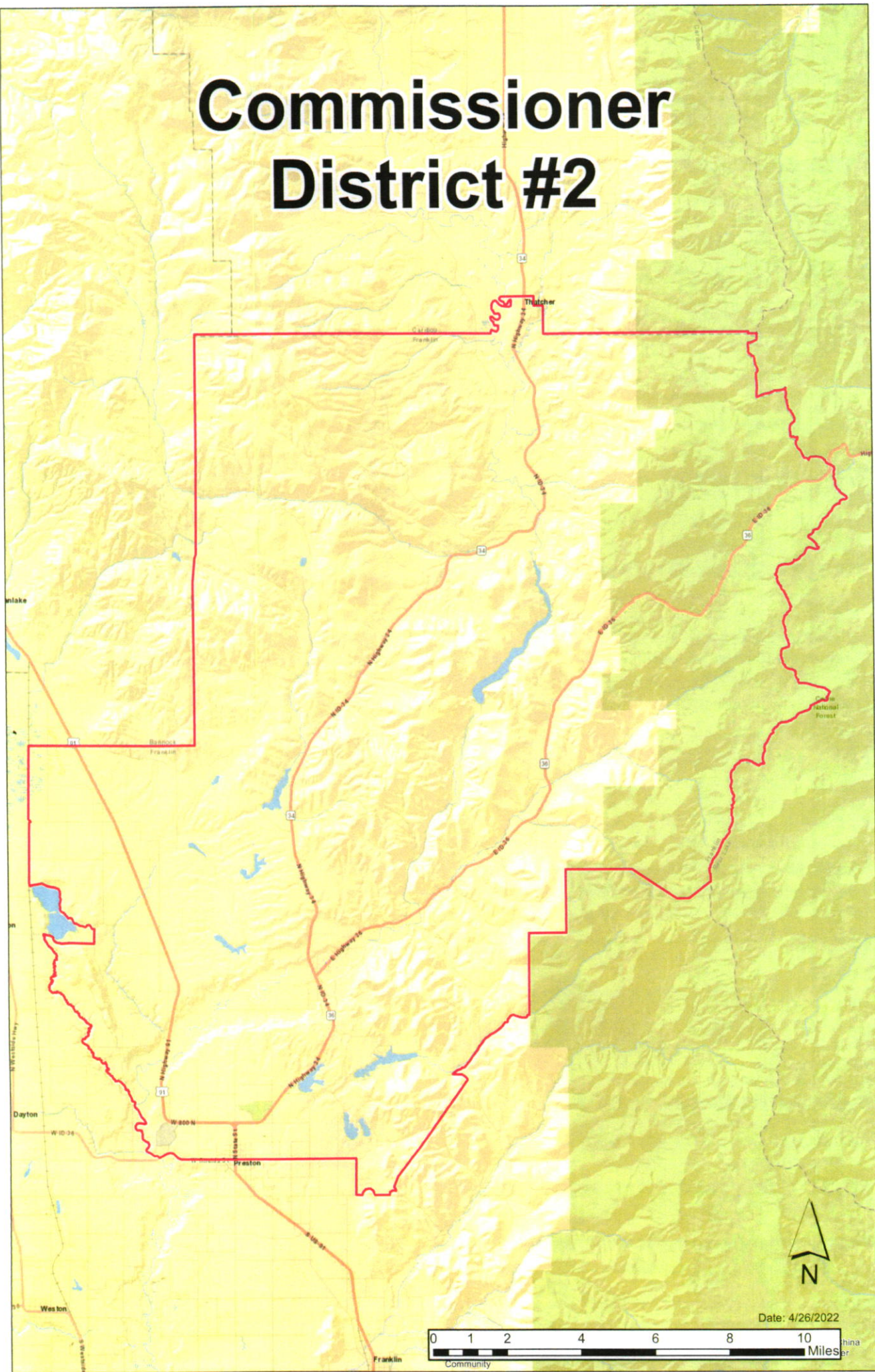
Thence west along the Franklin County Boundary, following all directional changes to said boundary, until it intersects with 800 East;

Thence north on 800 East to Sugar Factory Road;

Thence west on Sugar Factory Road to State Street;

Thence north on State Street to the point of beginning.

Commissioner District #2



FRANKLIN COUNTY COMMISSIONER DISTRICT #2

Commencing at the intersection of State Street and Oneida Street;

Thence east on Oneida Street to 2600 East;

Thence south on 2600 East to 800 South;

Thence east on 800 South to the top of Giraffe Hill,

Thence northeasterly on a dirt road, following the dirt road to a peak;

Thence northeasterly along the ridge line to Glendale Road where the Preston water line intersects with Glendale Road;

Thence northwesterly on Glendale Road to Worm Creek Road;

Thence northeasterly on Worm Creek Road to the Caribou-Targhee National Forest boundary line;

Thence north 2 miles along the Caribou-Targhee National Forest boundary;

Thence east 1 mile along the Caribou-Targhee National Forest boundary;

Thence north 1 $\frac{3}{4}$ mile along the Caribou-Targhee National Forest boundary to the power lines;

Thence east along the power lines, following all directional changes of said power lines, until reaching the Franklin County boundary;

Thence north along the Franklin County Boundary line, following all directional changes of said boundary, until it reaches the north east corner of the Franklin County Boundary;

Thence west along the Franklin County Boundary, following all directional changes to said boundary, until it intersects with the Union Pacific Railroad;

Thence south on the Union Pacific Railroad to the intersection of 7200 North and 4200 West;

Thence south on 4200 West to Twin Lakes Road;

Thence southeasterly on Twin Lakes Road to Little Mountain Road;

Thence south on Little Mountain Road to the power lines;

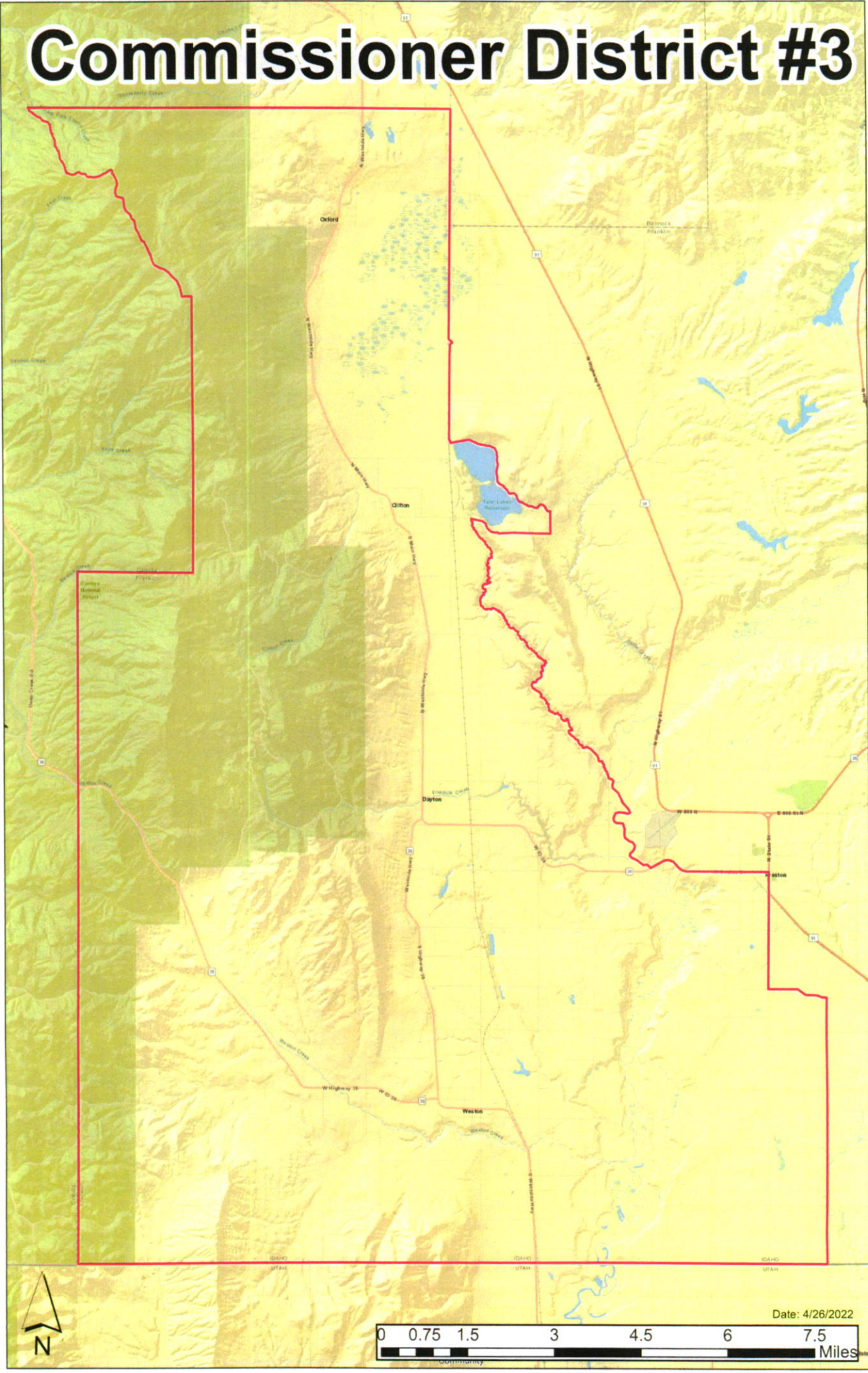
Thence west, following the power lines in all directional changes of said power lines, until reaching Deep Creek;

Thence southeasterly along Deep Creek to the Bear River;

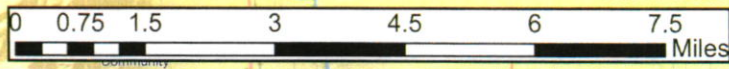
Thence southeasterly along the Bear River to Highway 36;

Thence east on Highway 36 to the point of beginning.

Commissioner District #3



Date: 4/26/2022



FRANKLIN COUNTY COMMISSIONER DISTRICT #3

Commencing at the intersection of State Street and Oneida Street;

Thence south on State Street to Sugar Factory Road;

Thence east on Sugar Factory Road to 800 East;

Thence south on 800 East to the Franklin County Boundary;

Thence west on the Franklin County Boundary to the south west corner of the Franklin County Boundary;

Thence north along the Franklin County Boundary, following all directional changes to said boundary, until it reaches the north west corner of the Franklin County Boundary;

Thence east along the Franklin County Boundary, following all directional changes to said boundary, until it intersects with the Union Pacific Railroad;

Thence south on the Union Pacific Railroad to the intersection of 7200 North and 4200 West;

Thence south on 4200 West to Twin Lakes Road;

Thence southeasterly on Twin Lakes Road to Little Mountain Road;

Thence south on Little Mountain Road to the power lines;

Thence west, following the power lines in all directional changes of said power lines, until reaching Deep Creek;

Thence southeasterly along Deep Creek to the Bear River;

Thence southeasterly along the Bear River to Highway 36;

Thence east on Highway 36 to the point of beginning.